

Quarterly Newsletter for Biznet Costumers & Partners

NEWS | b

BIZNET®



Modern Office Concept



Warm Eid Wishes

From the Management and Staff PT. Supra Primatama Nusantara

BIZNET[®]



Adi Kusma

President Director

adi_kusma@biznetnetworks.com

First of all, on behalf of Biznet Management & Staff, I would like to say Happy Eid for those who celebrate the Holy Day. In this joyful month, we would like to share a great moment with our business partners as we celebrate our 8th Anniversary on 1 Oct 2008.

Time flies and Biznet is already in its 8 years of continuous dedication to improve Indonesia's telecommunication infrastructure. So far, Biznet has built approximately 1.000 KM fiber optic network in Indonesia. Thru its Biznet Powered Building program, Biznet has connected more than 230 buildings and complexes throughout Jakarta, Bali, Bandung and Surabaya that ranges from office, apartments, hotel, malls and industrial estate.

As our continuous effort to improve our service, we have renovated our Headquarter at Midplaza 2, with a new modern office environment that gives comfort to both our employees and customers.

Biznet's new office has better facilities than before. It features more meeting rooms and a redesigned max3 store Sudirman that eases the way to register for new service or top up existing account. At Biznet Lounge, anyone can enjoy a cup of coffee or snack for free.

With the new modern environment, everyone can feel more fresh and dynamic. As part of our dedication to keep competitive, Biznet will keep innovating as a way to improve Indonesia's telecommunication industry. Once again, thank you for your support and we're looking forward to see you at our new office.

Editor marketing@biznetnetworks.com, Head Office MidPlaza 2, 8th Floor, Jl. Jend. Sudirman Kav 10 - 11 Jakarta 10220, Indonesia, Tel: + 62 21 5799 88 88, Fax: + 62 21 5700 580, TollFree: 0800-1-BIZNET
Bandung Branch Graha International, Lantai 3A, Jl. Asia Afrika No.129,Bandung, Tel: +62-22-426-7088
Bali Branch Komplek Tragia Blok E No. 33 - 35, Jl. BayPass Ngurah Rai, Benoa Nusa Dua - Bali, Indonesia
Tel: + 62 361 771 631, Fax: + 62 361 774 980, Surabaya Branch Intiland Tower 9th Floor, Suite 5A
Jl. Panglima Sudirman No. 101 - 103, Surabaya 60271, Indonesia, Tel: + 62 31 534 93 88, Fax: + 62 31 534 93 83

Biznet's Modern Office Look



Biznet Lounge at MidPlaza

T

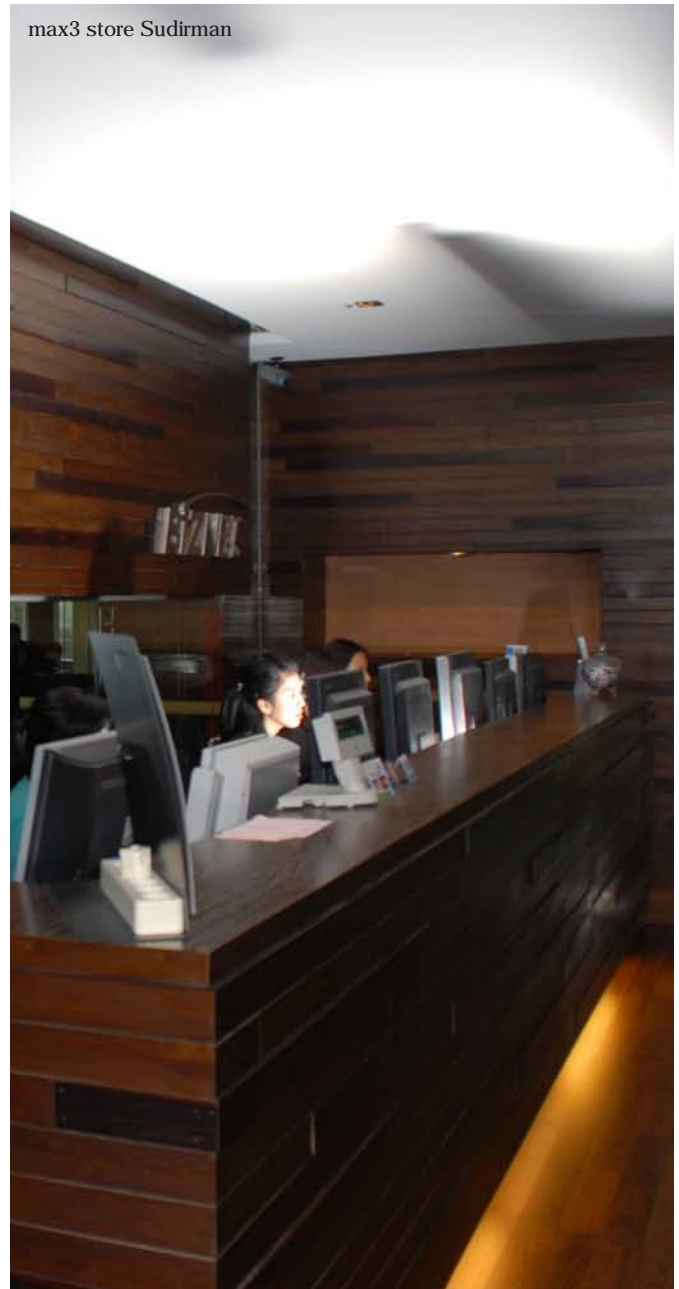
oday's office is a rapidly changing environment. Changes in the office environment are part of the transformational effort by the company to keep improving its competitiveness. Changes in the working environment are one of the things regarded as crucial that could affects employees' productivity. If the working environment is comfortable, it will improve their performance and at the end it will increase the company's bottom line.

This elegant feeling will give a touch of comfort not just to our customers but also to our employees

Entering Biznet's 8th anniversary, Biznet had renovated its Headquarter and appears in a new fresh look. After being renovated for several months, the new Biznet Headquarter, appears in an elegant office environment. This concept is the brainchild of the collaboration between our team and TWS & Partners. TWS & Partners is among the most sought after interior designer due to its reputation from designing many commercial and hospitality projects in Jakarta, Bali and also overseas.

The wooden touch of the interiors will give its users a more intimate and cozy feeling. This commitment to be different is part of our effort to become the leader in this industry. This elegant feeling will give a touch of comfort not just to our customers but also to our employees. With added facilities such as more meeting rooms and comfortable waiting area, we guaranteed that the customer will feel right at home at our office. Using the lounge concept, now, every customer can relax and enjoy a sip of coffee or two while meeting with our team. We are looking forward to see you soon at our office.

max3 store Sudirman





max3 New Logo

W

e're proudly presenting you the new max3 logo and the philosophy behind it. The new logo was redesigned by BD+ADesign, one of the initiators for establishment of The Design Alliance™, a regional association of independent design consultancies. We believe the agency is capable to enhance our brand including the brand environment.

BD+ADesign choose the modern alphabet for the typography that is combine with lowercase type, its part of the embodiment of the new max3 which are young, friendly, trendy, simple and dynamic. As for the color, dark grey exhibits max3 principle of professionalism and reliability. In addition to that, the color also represents max3's independence and balance as well. Yellow was chosen not only to symbolize friendly personality, but also to show max3's positive, happy, optimist, bright and light attitudes.

The new logo will be seen all over our new and existing stores. We believe that this new logo will not only show max3 traits that suit you, but also represent a better max3 for you. This change of logo is also followed by a lot of improvement in the coverage area. max3 is not a service, it's a lifestyle.






Biznet Powered Building Coverage Area



No	Building Name	Address	Availability
<div>Sudirman Area Office</div>	1 Bank Resona Perdania	Jl. Jend. Sudirman Kav 40-41	Now
	2 Chase Plaza	Jl. Jend. Sudirman Kav 21	Now
	3 Gedung ASEAN	Jl. Sisingamangaraja 70A	Now
	4 Gedung BRI 1	Jl. Jend. Sudirman 46-48	Now
	5 Gedung Panin Bank	Jl. Jend. Sudirman Kav 1 - Senayan	Now
	6 Graha Niaga	Jl. Jend. Sudirman Kav. 58	Now
	7 Mayapada Tower	Jl. Jend. Sudirman Kav 28	Now
	8 Menara Batavia	Jl. KH. Mas Mansyur Kav 126	Now
	9 Menara Sudirman	Jl. Jend. Sudirman Kav 60	Now
	10 MidPlaza 1 & 2	Jl. Jend. Sudirman Kav 10-11	Now
	11 Permata Bank Tower	Jl. Jend. Sudirman Kav 27	Now
	12 Plaza Asia	Jl. Jend. Sudirman Kav 59	Now
	13 Plaza Bapindo	Jl. Jend. Sudirman Kav 54-55	Now
	14 Plaza DM	Jl. Jend. Sudirman Kav 25	Now
	15 Plaza Lippo	Jl. Jend. Sudirman Kav 25	Now
	16 Plaza Sentral	Jl. Jend. Sudirman Kav 47	Now
	17 Prince Center	Jl. Jend. Sudirman Kav 3-4	Now
	18 Sahid Boutique Office	Jl. Jend. Sudirman No 86	Now
	19 Sampoerna Strategic Square A & B	Jl. Jend. Sudirman Kav 45-46	Now
	20 Senayan City Boutique Office	Jl. Asia Afrika Lot. 19	Now
	21 Sentra Senayan I & II	Jl. Asia Afrika No 8	Now
	22 Sona Topas Tower	Jl. Jend. Sudirman Kav 26	Now
	23 STC Senayan	Jl. Asia Afrika Pintu IX Gelora Bung Karno	Now
	24 Summitmas 1 & 2	Jl. Jend. Sudirman Kav 61-62	Now
	25 Wisma 46	Jl. Jend. Sudirman Kav 1	Now
	26 Wisma BCA	Jl. Jend. Sudirman	Now
	27 Wisma Bisnis Indonesia	Jl. KH Mas Mansyur No 12A	Now
	28 Wisma BNI 46	Jl. Jend. Sudirman Kav 1	Now
	29 Wisma Bumiputera	Jl. Jend. Sudirman Kav 75	Now
	30 Wisma Dharmala Sakti	Jl. Jend. Sudirman Kav 32	Now
	31 Wisma Kyoei Prince	Jl. Jend. Sudirman Kav 3-4	Now
	32 Wisma Metropolitan 1 & 2	Jl. Jend. Sudirman Kav 29-31	Now
	33 Wisma Nugra Santana	Jl. Jend. Sudirman Kav 7-8	Now
	34 Wisma Standard Chartered Bank	Jl. Jend. Sudirman Kav 33A	Now
	35 Wisma Sudirman	Jl. Jend. Sudirman Kav 34	Now
	36 Wisma Tamara	Jl. Jend. Sudirman Kav 24	Now
	37 World Trade Center	Jl. Jend. Sudirman Kav 29-31	Now
<div>Hotel & Apartment</div>	38 Apartemen Pavillion	Jl. KH Mas Mansyur Kav 24	Now
	39 City Lofts Sudirman	Jl. KH Mas Mansyur No 121	Now
	40 Istana Sahid Apartment	Jl. Jend. Sudirman No 86	Now
	41 Plaza Residences	Jl. Jend. Sudirman Kav 10-11	Now
	42 Senayan City Apartment	Jl. Asia Afrika Lot. 19	Now
	43 Sudirman Mansion Apt	Jl. Jend. Sudirman Kav 59	Now
	44 Hotel Sultan	Jl. Jend. Sudirman	Now
	45 Inter-Continental MidPlaza	Jl. Jend. Sudirman Kav 10-11	Now
<div>Shopping Mall</div>	46 Apartemen Batavia	Jl. KH Mas Mansyur Kav 126	Now
	47 City Walk Sudirman	Jl. KH Mas Mansyur No 121	Now
	48 Plaza Senayan	Jl. Asia Afrika No 8	Now
	49 Senayan City Mall	Jl. Asia Afrika Lot. 19	Now
	50 Sudirman Place	Pintu Satu Gelora	Now
	51 Century Tower	Jl. HR Rasuna Said Kav X2 Kav 4	Now

Biznet Powered Building Coverage Area



No	Building Name	Address	Availability	
52	Ebenezer Building	Jl. Setiabudi Selatan No.1	Now	 Kuningan Area Office
53	Gedung Granadi	Jl. HR Rasuna Said Kav XI	Now	
54	Gedung Lina	Jl. HR Rasuna Said Kav B-7	Now	
55	Gedung Tira	Jl. HR Rasuna Said Kav.B-3	Now	
56	Gedung Wahana Tata	Jl. HR Rasuna Said C-4	Now	
57	Gedung Wirausaha	Jl. HR Rasuna Said Kav. C-5	Now	
58	Graha Ekonomi	Jl. Setiabudi Selatan Kav. 7-8	Now	
59	Graha FCB	Jl. Setiabudi Selatan No.10	Now	
60	Graha Irama	Jl. HR Rasuna Said Kav X-1 No. 2	Now	
61	Graha MIK	Jl. Setiabudi Selatan Kav. 16 - 17	Now	
62	Graha Paramitha	Jl. Denpasar Raya No. 8 Blok D-2 Kav 8	Now	
63	Graha Surya Internusa	Jl. HR Rasuna Said St. Kav X-0	Now	
64	Mega Kuningan-Kantor Taman A9	Jl. Mega Kuningan Lot 8-9	Now	
65	Mega Kuningan-Kantor Taman E33	Jl. Mega Kuningan Lot 8.6 - 8.7	Now	
66	Mega Kuningan-Menara Anugrah	Jl. Mega Kuningan Lot 8.6 - 8.7	Now	
67	Mega Kuningan-Menara Danamon	Jl. Prof.Dr.Satrio Kav E4/6 - Mega Kuningan	Now	
68	Mega Kuningan-Menara DEA	Jl. Mega Kuningan Barat IX Kav E4.3 No 1	Now	
69	Mega Kuningan-Menara Prima	Jl. Lingkar Mega Kuningan Kav E3.2 No 3&4	Now	
70	Mega Kuningan-Plaza Mutiara	Jl. Lingkar Mega Kuningan Kav E1.2 No 1&2	Now	
71	Mega Kuningan-The East	Jl. Lingkar Mega Kuningan Kav E3.2 No 1	Now	
72	Mega Plaza	Jl. HR Rasuna Said Kav C-3	Now	
73	Menara Duta	Jl. HR Rasuna Said Kav B-9	Now	
74	Menara Gracia	Jl. HR Rasuna Said Kav C-17	Now	
75	Menara Imperium	Jl. HR Rasuna Said Kav 1	Now	
76	Menara Kadin	Jl. HR Rasuna Said Blok X-5 Kav.2-3	Now	
77	Menara Karya	Jl. HR Rasuna Said Blok X-5 Kav 1-2	Now	
78	Menara Kuningan	Jl. HR Rasuna Said Kav X-7	Now	
79	Plaza Centris	Jl. HR Rasuna Said Kav B5	Now	
80	Plaza Great River	Jl. HR Rasuna Said Block X-2 No. 1	Now	
81	Puri Matari	Jl. HR Rasuna Said Kav H1-2	Now	
82	Wisma Bakrie	Jl. HR Rasuna Said Kav B-1	Now	
83	Wisma Budi	Jl. HR Rasuna Said Kav C6	Now	
84	Gedung Ariobimo	Jl. HR Rasuna Said Blok X-2 Kav. 5	Now	
85	Four Seasons Residences	Jl. HR Rasuna Said	Now	 Hotel & Apartment
86	Puri Imperiuma Apartment	Jl. HR Rasuna Said Kav 1	Now	
87	Four Seasons Hotel	Jl. HR Rasuna Said	Now	
88	Mega Kuningan - JW Marriot	Jl. Lingkar Mega Kuningan Kav E1.2 No 1&2	Now	
89	The Park Lane Jakarta	Jl. Casablanca Kav 18	Now	
90	Bangkok Bank Building	Jl. MH Thamrin No. 3	Now	 Thamrin Area Office
91	Deutsche Bank Building	Jl. Imam Bonjol No. 80	Now	
92	Exim Melati Building	Jl. MH Thamrin Kav. 8-9	Now	
93	Gedung BPPT	Jl. MH Thamrin No 8	Now	
94	Gedung E-Trade	Jl. Wahid Hasyim No 55	Now	
95	Gedung Jaya	Jl. MH Thamrin No 12	Now	
96	Gedung Sarinah	Jl. MH Thamrin No 11	Now	
97	Menara BDN	Jl. MH Thamrin No. 5	Now	
98	Menara Cakrawala	Jl. MH Thamrin No. 9	Now	
99	Menara Kebon Sirih	Jl. Kebon Sirih 17-19	Now	
100	Menara Thamrin	Jl. MH Thamrin No 3	Now	
101	Oil Center Building	Jl. MH Thamrin No 55	Now	
102	Plaza BBD	Jl. Imam Bonjol No. 61	Now	

Biznet Powered Building Coverage Area



	No	Building Name	Address	Availability
<div>Thamrin Area Office</div>	103	Plaza BII	Jl. MH Thamrin No. 51	Now
	104	Plaza Permata	Jl. MH Thamrin Kav 57	Now
	105	Wisma Antara	Jl. Medan Merdeka Selatan No 17	Now
	106	Wisma Kosgoro	Jl. MH Thamrin No 53	Now
	107	Wisma Nusantara	Jl. MH Thamrin No 59	Now
<div>Hotel & Apartment</div>	108	Nikko Hotel Jakarta	Jl. MH Thamrin No 59	Now
<div>Shopping Mall</div>	109	Djakarta Theater	Jl. MH Thamrin No 9	Now
<div>Gatot Subroto Area Office</div>	110	Balai Kartini	Jl. Gatot Subroto No 37	Now
	111	Cyber Building	Jl. Kuningan Barat No 8	Now
	112	Gedung Adhi Graha	Jl. Gatot Subroto Kav 56	Now
	113	Gedung Citra Graha	Jl. Gatot Subroto Kav. 35-36	Now
	114	Gedung Nucira	Jl. Let. Jend. MT. Haryono Kav 27	Now
	115	Gedung Samudera Indonesia	Jl. Letjen S. Parman Kav. 35	Now
	116	Gedung Tifa	Jl. Kuningan Barat No 26	Now
	117	Gedung Total	Jl. S. Parman Kav. 106 A	Now
	118	Gedung Toto	Jl. Tomang Raya No. 18	Now
	119	Graha BIP	Jl. Gatot Subroto Kav 23	Now
	120	Graha Pratama	Jl. Letjen MT. Haryono Kav 15	Now
	121	Korean Center	Jl. Gatot Subroto Kav 58	Now
	122	Menara Jamsostek	Jl. Gatot Subroto No 38	Now
	123	Menara Supra	Jl. Letjen S Parman Kav 76	Now
	124	Patra Jasa Tower	Jl. Gatot Subroto Kav 32-34	Now
	125	Plaza Mandiri	Jl. Gatot Subroto Kav. 36-38	Now
	126	Wisma 76	Jl. Letjend. S. Parman Kav 76	Now
	127	Wisma 77	Jl. Letjend. S. Parman Kav 77	Now
	128	Wisma Aldiron	Jl. Gatot Subroto Kav 72	Now
	129	Wisma Asia 1 & 2	Jl. S. Parman Kav 79	Now
<div>Hotel & Apartment</div>	137	Apartemen Palm Court	Jl. Gatot Subroto Kav. 26-27	Now
	138	Apartemen Slipi	Jl. Let. Jend. S. Parman 22-24	Now
<div>Shopping Mall</div>	139	Jakarta Design Center	Jl. Gatot Subroto Kav 53	Now

Biznet Powered Building Coverage Area



No	Building Name	Address	Availability	
140	Arkadia Office Park	Jl. TB Simatupang Kav 88	Now	TB Simatupang Area Office
141	Beltway Office Park Building A & C	Jl. TB Simatupang No 41	Now	
142	Gedung Lintas Arta	Jl. Let. Jend. TB Simatupang	Now	
143	Gedung Otomall	Jl. TB. Simatupang Kav 1S	Now	
144	Gedung Prasetya Mulya	Jl. RA Kartini	Now	
145	Gedung Trakindo	Jl. Cilandak KKO Raya	Now	
146	Gedung Ventura	Jl. RA Kartini 26	Now	
147	Graha Elnusa	Jl. TB Simatupang Kav 1B	Now	
148	Graha Satria	Jl. RS Fatmawati No 5	Now	
149	Graha Simatupang	Jl. TB Simatupang Kav 10	Now	
150	Grha Asuransi Astra	Jl. TB Simatupang Kav 15	Now	
151	Menara Talavera	Jl. TB Simatupang	Now	
152	PT. ODG Wormald Indonesia	Jl. TB Simatupang 150 B	Now	
153	Ratu Prabu 1	Jl. TB. Simatupang Kav 20	Now	
154	Ratu Prabu 2	Jl. TB. Simatupang Kav 18	Now	
155	Graha Sapta Indra	Jl. TB Simatupang	Now	
156	Apartemen Cilandak	Jl. Cilandak I No.27	Now	Hotel & Apartment
157	Apartemen Parama	Jl. TB Simatupang	Now	
158	Cilandak Commercial Estate	Jl. Raya Cilandak KKO	Now	Industrial Estate
159	Gedung Maspion Plaza	Jl. Gunung Sahari Raya Kav.18	Now	Other Areas (North Jakarta) Office
160	Graha Kirana	Jl. Yos Sudarso Kav 88	Now	
161	Perwata Tower	CBD Pluit - Jl. Pluit Selatan Raya	Now	
162	PT. Toyota Astra Motor	Jl. Laksda Yos Sudarso	Now	
163	Wisma SMR	Jl. Yos Sudarso Kav 89	Now	
164	Rukan Mitra Boulevard	Jl. Yos Sudarso Kav 89	Now	
165	Apartemen Cilandak	Jl. Cilandak I No.27	Now	Hotel & Apartment
166	Apartemen Parama	Jl. TB Simatupang	Now	
167	The Summit Apartment	Jl. Bulevar Kelapa Gading, Sentra Kelapa Gading	Now	
168	Pluit Junction	Jl. Pluit Raya No 1	Now	Shopping Mall
169	Mal Kelapa Gading 1, 2, 3 & 5	Jl. Bulevar Kelapa Gading Blok M Sentra Kelapa Gading	Now	
170	Dharmawangsa Residence	Jl. Dharmawangsa VII No. 5, Jakarta 12160	Now	Other Areas (South Jakarta) Office
171	Gedung Oleos	Jl. Warung Jati Barat 1	Now	
172	Gedung Tetrapak	Jl. Mampang Prapatan Kav 100	Now	
173	Gedung Victoria	Jl. S. Hasanuddin Kav 47-51	Now	
174	Graha Darya Varia	Jl. Melawai Raya No. 93	Now	
175	Graha Inti Fauzi	Jl. Buncit Raya No. 22	Now	
176	Graha Iskandarsyah	Jl. Iskandarsyah No 66C	Now	
177	Graha Kapital	Jl. Kemang Raya No 4	Now	
178	Graha Mobisel	Jl. Mampang Prapatan Raya No 139	Now	
179	Graha Pulo	Jl. Buncit Raya No 89	Now	



Biznet Powered Building Coverage Area



	No	Building Name	Address	Availability
<div>Other Areas (South Jakarta) Office</div>	180	Menara Citibank Pondok Indah	Jl. Metro Pondok Indah Kav. II/BA No. 1	Now
	181	Rukan Duta Mas Fatmawati	Jl. RS Fatmawati No 39	Now
	182	Rukan Fatmawati Mas	Jl. RS Fatmawati Kav 20	Now
	183	Rukan Golden Plaza	Jl. RS Fatmawati No 15	Now
	184	Rukan Majapahit	Jl. Komplek Majapahit Permai 18-22	Now
	185	Rukan Wijaya Grand Center	Jl. Wijaya II	Now
	186	Wisma Daria	Jl. Iskandarsyah Raya No 7	Now
	187	Wisma Iskandarsyah	Jl. Iskandarsyah Raya Kav 12-14	Now
	188	Wisma Mampang	Jl. Mampang Prapatan Raya No 1	Now
	189	Wisma Pondok Indah 1 & 2	Jl. Sultan Iskandar Muda V TA	Now
	190	Graha Uninet	Jl. Warung Buncit Raya No 25	Now
	191	One Wolter Place	Jl. Wolter Monginsidi 63B	Now
	192	Recapital Building	Jl. Adityawarman Kav. 55	Now
	193	Rukan Bumimas Fatmawati	Jl. Terogong Raya No. 18	Now
<div>Hotel & Apartment</div>	194	Apartemen Permata Safir	Jl. Permata Safir B1 W/9	Now
	195	Apartemen Puri Casablanca	Jl. Puri Casablanca No 1	Now
	196	Apartemen Simprug Indah	Jl. Teuku Nyak Arif (Arteri Simprug)	Now
	197	Apartment Golf Pondok Indah	Jl. Metro Pondok Indah	Now
	198	Apartemen Puri Casablanca	Jl. Casablanca Kav 7	Now
<div>Shopping Mall</div>	199	Pondok Indah Mall 1 & 2	Jl. Metro Pondok Indah Blok 3B	Now
<div>Other Areas (Central Jakarta) Office</div>	200	Gedung BMG	Jl. Angkasa 1 No 2	Now
	201	Gedung Kwarnas	Jl. Merdeka Timur No 6	Now
	202	Graha Atrium	Jl. Senen Raya No 135	Now
	203	Menara BTN	Jl. Gajah Mada No 1	Now
	204	PT. Djakarta Lloyd	Jl. Senen Raya No 4	Now
	205	Rukan Atrium	Jl. Senen Raya 135	Now
	206	Rukan Bumi Harmoni	Jl. Majapahit No 30	Now
	207	Wisma BSG	Jl. Abdul Muis No 40	Now
	208	Wisma Haka	Jl. Wahid Hasyim 71	Now
	209	Wisma ITC	Jl. Abdul Muis No 8	Now
	210	Wisma Sinarmas Dipta	Jl. Fachruddin No. 18	Now
	211	Gedung Bank Ganesha	Jl. Hayam Wuruk No 28	Now
	212	Rukan Duta Merlin	Jl. Gajah Mada 3-5	Now
	213	Rukan Harmoni Plaza	Jl. Suryopranoto 2	Now
<div>Hotel & Apartment</div>	214	Apartemen Istana Harmoni	Kompleks Harmoni Plaza, Jl. Suryopranoto 2	Now
	215	Apartment Menteng Regency	Jl. RP. Soeroso St. No. 10-12	Now
<div>Shopping Mall</div>	216	Plaza Atrium	Jl. Senen Raya 135	Now

Biznet Powered Building Coverage Area



No	Building Name	Address	Availability
217	PT. Core Mediatech	Jl. Matraman 1 No. 9	Now 
218 219 220 221 222 223	Hayam Wuruk Office Lindeteves Trade Center Lion Air Tower Wisma Hayam Wuruk Wisma Indovision Gedung Lelco	Jl. Hayam Wuruk No. 108 Jl. Hayam Wuruk No 127 Jl. Gajah Mada No.7 Jl. Hayam Wuruk 123 Jl. Raya Panjang Blok Z / III Green Garden Jl. Tomang Raya No 14	Now Now Now Now Now Now 
224	Glodok Plaza	Jl. Pinangsia Raya No 1	Now 
225	German Center	Jl. Kapt. Subijanto Dj - BSD Tangerang	Now 
226 227 228	Graha Bumiputera Graha Internasional Wisma HSBC	Jl. Asia Afrika No 141 - 147 Jl. Asia Afrika No 129 Jl. Asia Afrika No 116	Now Now Now 
229 230 231	Intiland Tower (Wisma Dharmala) Gedung Bumi Mandiri Graha Pasific	Jl. Panglima Sudirman No 101 - 103 Jl. Basuki Rahmat No 129 - 137 Jl. Basuki Rachmat No 87-91	Now Now Now 
232	Ritz Carlton Bali Resort & Spa	Jl. Karang Mas Sejahtera	Now 

For updated coverage area, please visit
www.biznetnetworks.com

Y

udie Haryanto was graduated from Bina Nusantara University in 2003. Yudie, his nickname, joined Biznet in June 2007 as a Marketing Communication Staff before he was transferred to Enterprise Division in September 2008. Due to his great effort and management skill, he was promoted as an Enterprise Sales Manager in July 2008.

Undergoing his new role as an Enterprise Manager, Yudie has several responsibilities that includes focus on several segments such as Finance (Bank, Insurance, Futures and Stock Broker), Oil & Mining, Travel (Cargo, Logistic, Airline, Tour & Travel), Education and also Governments.



**Yudie
Haryanto**

Enterprise Sales Manager

During his free time, Yudie likes to play basketball with his colleague every Wednesday. Besides sports, he has other hobbies such as watching car racing and also play online games. Yudie likes to spend his weekend with his friends and check out the latest hang out place or watch some movies.

As one of Biznet employees, Yudie hopes that Biznet will continue to strive in this business thus providing its customer with good service and good quality products. He also has a dream so that Biznet will eventually become one of the best telecommunication companies in Southeast Asia.

Testimonial

What do you think about Biznet's Office new look?

"Biznet's new office looks much better than the previous office and the friendly environment makes us (customer) feel more comfortable. What's more interesting is that we can also enjoy snacks and various soft drinks."

-Christian Kent,
IT Manager, PT Prudential Life Assurance-

-Adhi Safriansyah,
Regional Marketing Manager, Biznet-

"The lounge has tighten the relationship between each employee from different divisions, besides that our office looks more exclusive and we could entertain our client in our Lounge, so it's a good change for all of us"

"The atmosphere of Biznet's new office is good and calm, the lounge is very cozy. It would be even greater if you could add a little bit of touch of technology for the decoration to show Biznet role as a Network Provider"

-Michael Andreas Tasam,
Capacity Management & Partnership Enterprise & Carrier, PT. Excelcomindo Pratama. Tbk-

-Edric Kurniadi,
Finance & Accounting Manager, Biznet-

"The new office environment feels cozier now. It also has given more space for us (employees) to refresh our mind and to socialize with other employees. There are a lot of snacks and soft drinks for us to enjoy"

"Our new office has a different ambience and it is a fun place to hang out with some colleagues. The Lounge is very special because of the complete facilities for us to enjoy"

-Delsy Sutirna,
Web Developer, Biznet-

-Sientya Paramyta,
Inside Sales, Biznet-

"I love the lounge, it's very cozy and there are a lot of snacks. So far, I can say our new office is very cool"

"The design of Biznet's new office is very nice and modern. The Lounge is very comfortable,"

-Kwee Hiong,
Global Account Director Business Group,
SingTel-

-Husmen Ebrezi,
HR & GA Administration, Biznet-

"Our new office feels so comfortable and the presence of the lounge is very good because we (employee) can interact and get to know other employees. The lounge can also host any informal discussion. Plus, we have more meeting rooms now, it is very convenient when we have a lot interview."

"The office has a very modern environment and casual. Besides that, the wooden touch adds an elegant look that reflects Biznet professionalism."

-Shinichi Nikaya,
Director,
Japan Telecom Singapore PTE LTD-

Biznet Metro FTTH Coverage area

Postal Code	City	SubDistrict	Area	Availability
10120	Central Jakarta	Gambir	Kebon Kelapa	Now
10130	Central Jakarta	Gambir	Petojo Utara	Now
10150	Central Jakarta	Gambir	Cideng	Now
10160	Central Jakarta	Gambir	Petojo Selatan	Now
10220	Central Jakarta	Tanah Abang	Karet Tengsin	Now
10320	Central Jakarta	Menteng	Pegangsaan	Now
10330	Central Jakarta	Menteng	Cikini	Now
10340	Central Jakarta	Menteng	Kebon Sirih	Now
10350	Central Jakarta	Menteng	Gondangdia	Now
10730	Central Jakarta	Sawah Besar	Mangga Dua Selatan	Now
12110	South Jakarta	Kebayoran Baru	Selong	Now
12130	South Jakarta	Kebayoran Baru	Kramat Pela	Now
12150	South Jakarta	Kebayoran Baru	Cipete Utara	Now
12160	South Jakarta	Kebayoran Baru	Melawai	Now
12160	South Jakarta	Kebayoran Baru	Pulo	Now
12170	South Jakarta	Kebayoran Baru	Petogogan	Now
12180	South Jakarta	Kebayoran Baru	Rawa Barat	Now
12210	South Jakarta	Kebayoran Lama	Grogol Utara	Now
12220	South Jakarta	Kebayoran Lama	Grogol Selatan	Now
12430	South Jakarta	Cilandak	Cilandak Barat	Now
12510	South Jakarta	Pasar Minggu	Pejaten Barat	Now
12560	South Jakarta	Pasar Minggu	Cilandak Timur	Now
12730	South Jakarta	Mampang Prapatan	Bangka	Now
11150	West Jakarta	Taman Sari	Taman Sari	Now
11160	West Jakarta	Taman Sari	Maphar	Now
11170	West Jakarta	Taman Sari	Tangki	Now
11180	West Jakarta	Taman Sari	Mangga Besar	Now
14240	North Jakarta	Kelapa Gading	Kelapa Gading Barat	Now
14240	North Jakarta	Kelapa Gading	Kelapa Gading Timur	Now
14340	North Jakarta	Tanjung Priok	Papanggo	Now
14350	North Jakarta	Tanjung Priok	Sunter Jaya	Now
14350	North Jakarta	Tanjung Priok	Sunter Agung	Now
14450	North Jakarta	Penjaringan	Pluit	Oct 2008



For max3 updated coverage area information, please visit www.max3.co.id



Attachments not opening in Outlook Express

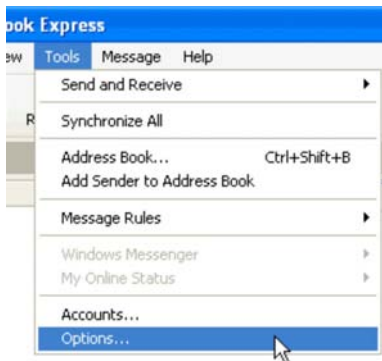
Solution to this problem



If you are unable to open an email attachments in Outlook Express, the solution is very simple. The program has actually disallowed you to open any attachments in email because there is a possibility that it may contain some virus or any other threats to security.

The solution is to change the configuration of Outlook Express through the Security options that I will explain in detail below. I would like to warn you that attachments can indeed contain virus and worms. It that can potentially put out your computer and could reduce your productivity. So please only open attachments from people that you know. If these are an executable programs do not run them unless you are absolutely sure of what you are doing.

Changing Outlook Express security settings to allow opening of email attachments

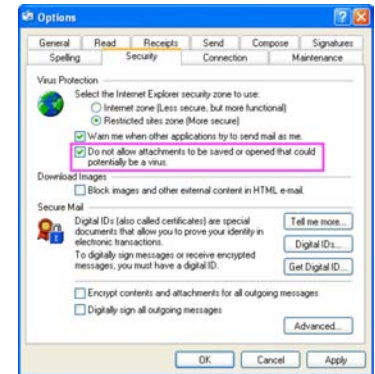


Open the security options window in Outlook Express by clicking on Tools from the top main menu and then Options - refer image below.

You will find that the "Do not allow attachments to be saved or opened..."

(refer image below) will have a check mark in front. Remove this check mark and click on the "Apply" button.

Note: in Outlook Express 6 SP1, the Do not allow attachments to be saved or opened that could potentially be a virus option is enabled so what we have done here is to disable it.



You would now be able to open any email attachment but please do follow the basic rules for opening these files as I have detailed above which are:

- Do not open attachments from unknown senders
- Do not run executable files that you get in emails. Some malicious files are disguised as .txt or likewise. It would be best to save them first on the hard-disk in a temporary directory, run a virus scan and then decide what to do.
- Do not open email attachments just because you have a sudden urge to or are tempted by its file name - we all know what I'm talking about here.

If receiving attachments is a part of your business (isn't it for all of us), get a good anti-virus scanner that also has real-time scanning for emails.

Source : www.webdevelopernotes.com

Event & Sponsorship

28 August 2008

Biznet Open Booth
Hotel Four Seasons
Ballroom

**22 - 23
August 2008**

Biznet Open Booth
Hotel Kempinski
Grand Indonesia

06 Jul 2008

IPTEK Car Parade &
Fun Bike at Mega
Glodok Kemayoran

21 August 2008

Biznet Open Booth
Plaza BII
(Narwastu Room)

12,19,26 Jul - 02 Aug 2008

Online Game Competition at Glodok
Plaza, Ground Floor



29 August 2008

Biznet participate in closed dialogue:
Welcoming the Cyber Province,
Yogyakarta

01 August 2008

Biznet Appreciation
Night 2008



04 - 05 August 2008

International Joint Seminar In Engineering
Universitas Al Azhar Indonesia Jakarta

21 August 2008

Polycom Health
Care Campaign
(Jade Room- Hotel
Nikko)

**Road
Show**

BIZNET

2 - 3 September 2008
Lobby Area Apartemen Permata Safir

29 - 30 August 2008
Retail Area Puri Casablanca Apartment

28 - 29 August 2008
Lobby Area Menara Kadin

27 - 28 August 2008
Lobby Area Graha Pacific Building
Surabaya

27 - 28 August 2008
Lobby Area Wisma Aldiron Building

25 - 26 August 2008
Lobby Area Apartment Palm Court
Tower 1

20 - 21 August 2008
Lobby Area Wisma Kosgoro Building

13 - 14 August 2008
Lobby Area Graha Inti Fauzi

09 - 10 August 2008
Lobby Cilandak Apartment

06 - 07 August 2008
Lobby Area Wisma Slipi Building

31 July - 01 August 2008
Lobby Area Victoria Building

19 - 20 July 2008
Lobby Tower 1 Apartment Golf
Pondok Indah

16 - 17 July 2008
Lobby Bumi Mandiri Building
Surabaya

16 - 17 July 2008
Lobby Area Wisma Indovision

09 - 10 Jul 2008
Sapta Indra Building - Lobby Area

02 - 03 Jul 2008
The East - Lobby Area

**Broadband Internet
MetroNET 512 Kbps
only Rp.1,000,000/month**

Register now!

**Info :
+62-21-57998888
www.biznetmetro.com**

metro
fiber optic network by **BIZNET**



BRINGING MODERN CITY LIFESTYLE

Biznet Powered Building has connected over 230 office buildings, apartments, hotels and malls in Jakarta, Bali, Bandung and Surabaya. It enables the tenants to have access to fast and reliable data service with reasonable price. To experience our service, make sure that you live and work within Biznet Powered Building! For up-to-date building list, please visit www.biznetpoweredbuilding.com.



+62-21-57998888

www.biznetnetworks.com

BIZNET®